



CERAMIC/SINTERED SURFACE SOLUTIONS

www.tenax4you.com • www.wehausa.com



Tenax USA's latest solution for Dekton® and Ceramic Materials

There's no denying the latest trend of Dekton® and ceramic materials in the market. Most of your fabricators struggle with cutting these materials. Tenax has a new line of blades that will help your fabricator cut with confidence and produce a clean edge with minimal chipping.

For those of you that like the strong but silent type... we have an industry first! Now available are the XXL and 45 Degree Blades. These are reinforced silent core blades designed for cutting miters. Truly unique and effective.

TENAX DEKTON® BLADES APPROVED BY COSENTINO®

- Available in 14" and 16"
- Specifically marketed to Dekton® material
- 1800-2100 RPM
- Feed rate/straight cut: 16"-60" per minute
- Feed rate/miter cut: 14"-32" per minute
- Standard 2.3mm core thickness

14" Dekton Blade: 4D-42104

16" Dekton Blade: 4D-41868



Dekton Thickness	RPM Ø360	RPM Ø410	RPM Ø460	FEED SPEED FT/min
8mm	2100-2400	1700-2100	1500-1800	48"-60"
12mm	2100-2400	1700-2100	1500-1800	40"-48"
20mm	2100-2400	1700-2100	1500-1800	24"-40"
30mm	2100-2400	1700-2100	1500-1800	16"-24"

Suggestions: While entering and exiting the cut, reduce the speed feed by 40-50%
While cutting at 45°, reduce the speed feed by 40%

CERAMIC BLADES



- Available in 14" and 16"
- Specifically marketed to all sintered material fabricators
- 14": 2150-2500 RPM / 16": 1900-2200 RPM
- Feed rate/straight cut: 800-2000mm per minute
- Feed rate/miter cut: 500-1400mm per minute
- Standard 2.3mm core thickness

Porcelain Thickness	RPM Ø360	RPM Ø410	FEED SPEED LM/min
3-4.9mm	2150-2500	1900-2200	1.5-1.8
5-9mm	2150-2500	1900-2200	1.2-1.5
10-12mm	2150-2500	1900-2200	1.0-1.2
13-20mm	2150-2500	1900-2200	0.8-1.0

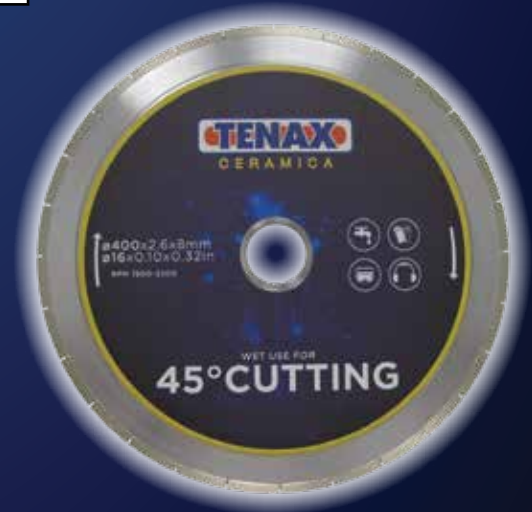
16" Ceramic Blade: 4D-41869

Suggestions: While entering and exiting the cut, reduce the speed feed by 40-50%. While cutting at 45°, reduce the speed feed by 40%.

45° MITER BLADE

- Available in 16"
- Extra thick 8.1mm core
- Miter up to 12mm thick
- Silent core
- 1900-2200 RPM

16" 45° Miter Blade: 4D-42418



XXL BLADE



- Available in 16"
- Thick 4.6mm core
- Miter up to 30mm thick
- Silent core
- 1700-2100 RPM

16" XXL Blade: 4D-42420

Tenax Dry Cut Ceramic Blade

The Dry Cut Ceramic Blade is a thin blade designed for chip free and fast cutting. The core has been designed to reduce heat and stay rigid. Use for wet or dry cutting.

Available in 4" and 5".



Weha Ceramica R-Mesh Turbo Blade

Weha Ceramica Thin Cut Turbo blade is an extra thin blade designed to cut Lapitec®, Dekton®, Neolith®, fast and extremely clean. The special Weha turbo design will remove the material rapidly and cleanly and providing maximum air to keep the blades as cool as possible when used dry. This produces a super clean cut with absolute minimal chipping.

Because the blade is only 1.2mm thick, the blade cuts ceramic, porcelain, granite, engineered stone, quartzite cleaner than any other turbo blade on the market.

Available in 4", 5", 6" and 7". Use for wet and dry cutting; 7/8" x 5/8"; max RPM 12,200.



Weha 5" Ultradunn Thin Blade

Weha Ultradunn Turbo Blade is an extra thin blade designed to cut Lapitec® & Dekton® very fast with a very clean chip free finish. Excellent for cut outs.



Weha Copper Core Continuous Rim Blade

Weha Copper Core continuous rim diamond blade for ceramic, porcelain, glass, and natural stone tile such as granite, marble, travertine, limestone, etc. Weha Copper Core Diamond Blade is made to pull the heat from the blade extending life and making a near perfect cut.

Weha Copper Core diamond blade is made with a special bond that can cut glass, porcelain, and stone with no chipping. Continuous Rim available in 4", 6", 8" and 10". Reinforced Continuous Rim available in 12" and 14". Extremely fast and aggressive cut.



4" Flap Diamond Cupwheel

The Weha Flap Diamond Disc Cupwheels are an outstanding aluminum backed diamond cup wheel for shaping and polishing granite, marble, engineered stone, quartzite, ceramic, porcelain, and other materials. These cup wheels have been fully tested on Cosentino Dekton®, Breton Lapitec®, Marble, Granite, Engineered Stone, Quartz materials, Concrete counter tops. They are perfectly balanced with zero vibration. The Weha Flap Diamond Cupwheels will not create any chipping at all.

Available in 60, 120, 200, and 400 grit. Light weight; zero chipping; outstanding for honing.



Weha 4" Pitbull Diamond Hybrid Resin Cupwheel

The Weha 4" Pitbull Diamond Resin Cupwheel is a New Hybrid Resin Polishing pad with a harder bond to perform like a resin filled diamond cup wheel. However, the Pitbull Resin Cupwheel will grind and shape with zero chipping on the material.

The Pitbull Resin Cupwheel comes on a light weight rigid aluminum back. The resin diamond looks like a traditional polishing pad. But the bond is a more durable, longer lasting bond that will outlast traditional polishing pads. The Weha 4" Pitbull Resin Cup wheel can run wet or dry on all materials including granite, marble, quartz, engineered stone, porcelain, ceramic, cultured, concrete, and other stone with zero chipping. The Resin Cupwheel can remove fiber mesh off the back of stone as fast as any diamond cupwheel can. It will create a bevel, round over, or larger radius very quickly. Available in 30, 50, 100, and 200 grit.



Weha 4" Viprotec Cupwheels for Lapitec® and Dekton®

Weha Viprotec Cupwheels are specialized rubber base cupwheels that absorb vibration when grinding and shaping on Lapitec®, Dekton®, and other ceramic and porcelain materials. Weha Viprotec Cup wheels will leave the stone smooth with no chipping. The specialized rubber base absorbs all vibration from the stone, creating a perfectly flat, smooth surface.

This rubber diamond cup wheel absorption creates less user fatigue and less strain on the tool. The Weha Aggressor Rubber Diamond Cup Wheel may be used on: granite, engineered stone, quartz, marble, all natural stones, concrete, terrazzo, etc.

Available in 4" Coarse, Medium and Fine. 5/8-11 thread.



Weha Weramic Porcelain Ceramic Core Bit 5/8-11 Thread

Weha Weramic 5/8-11 Core bit have been designed specifically for large porcelain panel and Ultra compact sintered stone material such as Dekton®, Lapitec®, Neolith®, Laminam®, etc. Weha Weramic porcelain and ceramic core bits work excellent on all ceramic products such as floor tile and wall tile. The Weramic porcelain core bits have been

built to core perfectly smooth, chip free holes on all thickness materials from 6mm, 8mm, 10mm, 12mm, 20mm, and 30mm. With a 2mm thick rim, these thin wall core bits will drill very clean and fast through the porcelain and ceramic materials.

Available in 1/2", 3/4", 1", 1 1/8", 1 1/4", 1 3/8", 1 1/2", 1 3/4", 2", 2 1/4", 2 3/8", 2 1/2", 2 3/4", 3", 3 1/4", 3 1/2". Wet or dry on material up to 6mm. Wet only for material thicker than 6mm. Total length 3 1/8". Drilling Depth 1 7/8". Recommended RPM between 1600-2800 rpm.

Weha Weramic Porcelain Ceramic Non Core Bit 5/8-11 Thread

Available in 1/4", 3/16", 5/16", 3/8".

Weha Weramic CNC Porcelain Ceramic Core Bits 1/2 Gas

Weha Weramic 1/2 Gas CNC Core bit has been designed specifically for large porcelain panel and Ultra compact sintered stone material such as Dekton®, Lapitec®, Neolith®, Laminam®, etc. Weha Weramic CNC porcelain and ceramic core bits work excellent on all CNC machines such as Breton®, Northwood®, Park Industries®, and other CNC machines.

These core bits have been built to core perfectly smooth, chip free holes on all thickness materials from 6mm - 30mm. With a 2mm thick rim, these thin wall core bits will drill very clean and fast through the porcelain and ceramic materials.

Available in 1", 1 1/4", 1 3/8", 1 1/2", 2", 2 1/2" and 3". Total length 3 7/8"; drilling depth 1 7/8"; recommended RPM: between 1400-2800; feed rate between 3"-4" per minute.



Weha Dry Magic Vacuum Brazed Core Bits

Weha Dry Magic Vacuum Brazed Core Bits are a Porcelain Core Bit, Ceramic Core Bit, Marble Core Bit, and Granite Core Bit all in one. The best vacuum brazed Dekton® Core Bit because it can be used wet or dry, minimal chipping, and no cracking of the Dekton®. Also, one of the best marble core bits for similar reasons. Virtually no chipping, minimal blowout on the bottom, fast drilling, and great life. Weha Vacuum Brazed Diamond Core Drill Bit drills cleanly dry with zero chipping. The vacuum brazing is on both the inside and outside of the barrel.

This special Vacuum II Brazed diamond technology allows an uncomplicated, hands-free and clean drilling on angle grinders. The vacuum diamond coating allows fast drilling with extremely clean, chip, free holes. The Weha Vacuum Brazed Core Bits are designed to drill hard and brittle materials such as ceramics, porcelain, marble, granite, stone materials. Also materials such as stoneware, glazed clinker and hard roof tiles can also be drilled.

Available in 1/4", 5/16", 3/8", 1/2", 9/16", 3/4", 1", 1 1/4", 1 3/8", 1 1/2", 1 3/4", 2", 2 3/8" and 2 1/2".

Dry use, may be used wet. Recommended RPM: 3000-11000. 5/8-11 thread.

Weha Dry Magic Hex Core Bits For Electric and Cordless Drills

Available in 1/4", 5/16", 3/8", 1/2", 9/16".

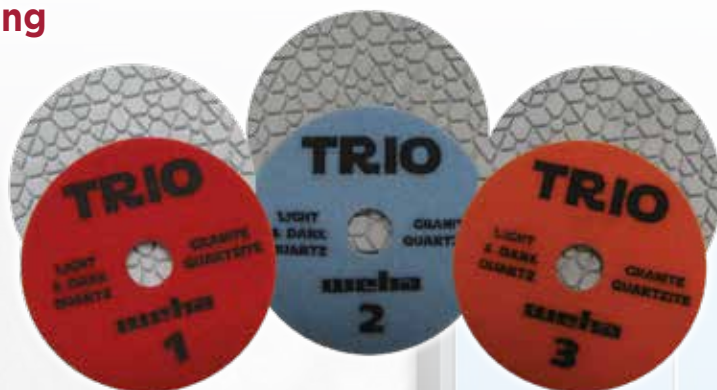


Weha Trio 3 Step White Hybrid Diamond Polishing Pads

The Trio 3 Step Diamond Polishing Pads really work. The Trio pads are packed with premium diamond and resin that are made to work exceptionally well on light and dark quartz, all engineered stone, as well as granite and quartzite.

Weha Trio 3 Step Polishing Pads are 3mm thick for a full matrix of diamonds. The edges around the pad are rounded allowing the pad to easily glide across the stone, especially inside bowls, ogees, and tighter radius profiles.

Available in Steps 1, 2, and 3. 3mm thick, super flexible, max RPM 4500



Weha Flash 7 Step Hybrid Diamond Polishing Pads

The Weha Flash 7 Step Diamond Polishing Pads are great for wet polishing and provide an excellent shine with no scratches. Not for dry polishing.

Available in Steps 1, 2, 3, 4, 5, 6, and 7.

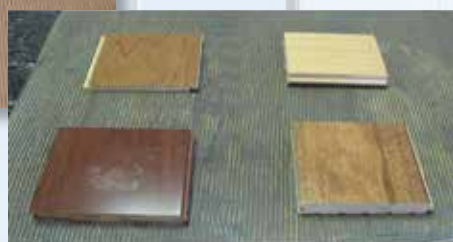


Weha Diamond Hand Polishing Pads

Weha Diamond Hand Polishing Pads work with ceramic, granite, marble, travertine, limestone, ceramic, concrete. Weha Diamond Polishing Hand Pads are preferred to be used wet, even with just a little water. Weha Diamond hand polishing pads are excellent for polishing up edges of material that has been profiled. The Weha Diamond Hand Polishing Pads come with a flexible foam backing that allows the pads to be used straight as well as be formed to the profiled edge that you are working with. Weha Diamond Hand Polishing Pads are 2" wide x 3 1/2" long for a firm grip for polishing. Available in 30, 60, 100, 200, 400, 800, 1500, 3000, 7000, Buff, and Black. Can be used wet or dry

Fixtop A & B 2 Part Epoxy

VOC Compliant



- Super strong epoxy tile and stone adhesive
- Easy to mix - smooth consistency - trowelable
- Easy clean up (water, lacquer thinner, acetone)
- Excellent bond to granite, mosaics, tile
- Does not dissolve or breakdown in water - great for shower applications, won't delaminate
- Allows for expansion and contraction
- 100% true epoxy adhesive
- Indoor/outdoor use
- Low VOC and respects LEED parameters

- Colorable: Universal Color Pastes
- Mixing ratio: 1:1
- Gel time (in bulk at 77°): 50-60 min
- Tacky free time (at 77°): 120 min
- Minimum reaction temperature: 50°
- Temp. range for use after hardening: -13° to 143°

**Part A & B available in
4 kg and 20 kg**

VOC Compliant

- Slow curing - super strong
- Ideal for setting countertops on plywood
- Easy to mix - smooth consistency - trowelable
- Easy clean up (water, lacquer thinner, acetone)
- 100% true epoxy adhesive
- Bonds hard but flexible
- Does not dissolve or breakdown in water - great for shower applications, won't delaminate
- Indoor/outdoor use

- Colorable: Universal Color Pastes
- Mixing ratio: 1:1
- Gel time (in bulk at 77°): 2-3 hrs
- Tacky free time (at 77°): 3-4 hrs
- Minimum reaction temperature: 50°
- Temp. range for use after hardening: -13° to 143°

Fixtop FixDeck A & B 2 Part Epoxy





Tenax Glaxs Colored Cartridge Glue 215 ml

- Zero yellowing to sunlight
- Excellent adhesion
- No oily effect or shadow
- Cures very fast
- Pre-dosed, ready-to-use
- Indoor/Outdoor use
- Zero VOC
- 50+ colors available - most popular colors matched

- Ratio: 2+1
- Gel time (in bulk at 77°): 4-5 min
- Tacky free time (at 77°): 15-20 min
- Minimum reaction temperature: 32°
- Temp. range for use after hardening: -13° to 140°



Use with
M200XMR
Cartridge gun

Tenax Lapitec Strongbond Cartridge Glue 215 ml

- Bi-component cartridge glue for Lapitec material
- Fast and easy dispensing
- Hardens bright
- Use with M200XMR Cartridge Gun

- Ratio: 2+1
- Gel time (in bulk at 77°): 3-5 min
- Tacky free time (at 77°): approx. 15 min
- Working time (at 77°): 45-60 min
- Temp. range for use after hardening: -13° to 140°



Tenax Mastidek Fast Outdoor Cartridge Glue 215 ml

- Bi-component cartridge glue for Dekton material
- Super strong - slow cure
- Completely invisible
- Zero Yellowing
- Offers good penetration
- Use with M200XMR Cartridge Gun

- Ratio: 2+1
- Gel time (in bulk at 77°): 2-5 min
- Tacky free time (at 77°): Approx. 15 min
- Working time (at 77°): 45-60 min
- Temp. range for use after hardening: -13° to 140°

Tenax Domo 21 Cartridge and Domo 10 - 2 Part Epoxy Knife Grade

- Extra strong - slow cure
- VOC compliant
- Bonds to wet surfaces
- Very high adhesion
- Great for bonding mixed materials
- Use with M200XMR Cartridge Gun

Domo 21 Cartridge:

- Gel time (in bulk at 77°): 10-15 min
- Tacky free time (at 77°): 90 min
- Minimum reaction temperature: 50°
- Temp. range for use after hardening: -22° to 140°

Domo 10 Knife Grade:

- Colorable: Universal Color Pastes
- Gel time (in bulk at 77°): 120-150 min
- Tacky free time (at 77°): 5 hours
- Minimum reaction temperature: 50°
- Temp. range for use after hardening: -13° to 143°



Domo 21 available in 215ml and 400 ml Bi-Component Cartridge or 1 Liter Part A and 1 Liter Part B

Tenax Titanium Extra Clear Glue Knife Grade

- Excellent adhesion
- Very fast
- Very low yellowing
- Very shiny and easy to polish
- Easy to color

- Mixing ratio: 100+1/2
- Gel time (in bulk at 77°): 4-5 min
- Tacky free time (at 77°): Appr. 15 min
- Working time (at 77°): 20-25 min
- Temp. range for use after hardening: 41°F to 230°F

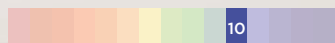


Available in 2 lb Quart, 10 lb Gallon and 21 lb Mini Bucket™



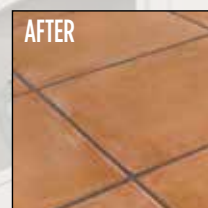
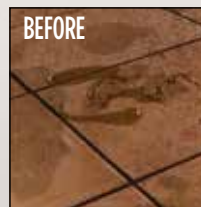
Tenax Booster Alkaline Cleaner 1 Liter

- Water-based
- Concentrated
- Pleasantly scented
- Removes stubborn organic dirt
- Removes water-based liquid waxes
- Rubber marks
- Removes epoxy residue
- Does not scratch surfaces



pH 10, alkaline

- Unpolished Marble, unpolished stone granite, ceramic, porcelain gres, cotto, cement, unpolished cement agglomerates, pvc
- ✓ For professional and homeowner use



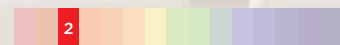
Lustro italiano™ Stone Cleaner

Lustro Italiano™ Stone Cleaner contains no harsh detergents that can strip away stones natural polish. Unlike some other household solvents, this cleaner will not shorten the life of stone sealants. Use this stone cleaner to help protect your stone surfaces. Can be used on natural stone, quartz stone, solid surface products such as Corian®, as well as stainless steel and ceramic tile. Streak free.

Available in 16 Fl oz. and 32 Fl. oz.



- Water-based
- Concentrated
- Pleasantly scented
- Excellent degreaser
- Does not contain hydrochloric acid
- Does not attack cement joints
- Does not emit corrosive fumes for metals
- Ideal for indoor use



pH 2, acid

- Acid resistant stones, clinker gres, cotto, glazed ceramics, cement*
- ✓ For professional and homeowner use



*Cement: Always work with the surface saturated with water. Carefully consider the product concentration and contact time for the porosity of the cement and limestone layer to be removed.

Tenax Skudo Universal Plus Stain Protection 1 Liter



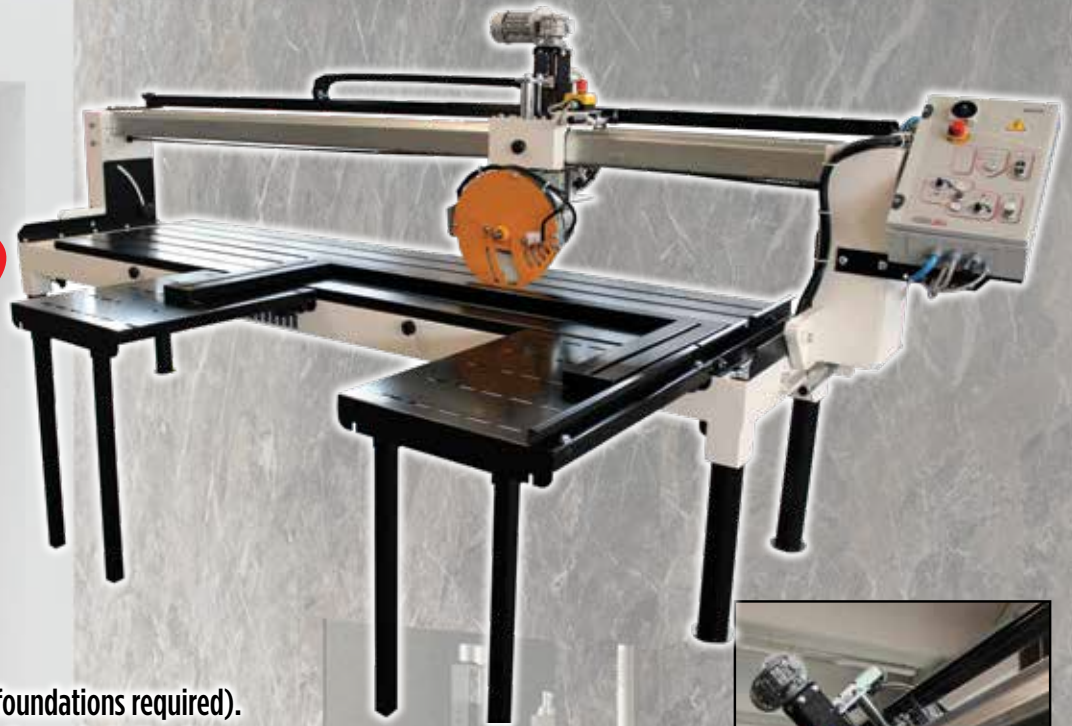
- Water-based sealer
- Does not change the appearance of the material
- Ideal for indoor and outdoor use
- High penetration power
- Ideal on shiny and compact materials
- Dries quickly
- Low VOC emission
- Can be applied on surfaces that are not completely dry
- For use on porcelain gres (in all finishes), marbles, granite, stones, cement



Achilli AFR 350 A Automatic Bridge Saw with Laser

Achilli AFR 350 A Automatic Bridge Saw for granite, marble, engineered stone, ceramic, porcelain material. The AFR A 350 will hold full slabs. Outstanding for repetitive production work on granite, marble, tile, and all types of natural, engineered stone, large porcelain slabs.

Achilli
EVOLUTION IN STONE TECHNOLOGY



Perfect for large porcelain panels!

- 137" (3500mm) length of cut
- Sturdy and compact structure (no foundations required).
- Head travel is motorized on X-axis (longwise). X-axis variable speed by inverter.
- Cutting depth adjustable is motorized.
- Manual bridge tilt from 90° to 45° to carry out bevel cutting.
- Fixed worktable with epoxy powder painted steel slats.
- 2 Side extension tables included
- Utilizes diamond blade 10", 12", 14" (250mm, 300mm, 350mm) in diameter
- Water tank with built-in recycling pump holds 68 gallons
- Weight: 1400 lbs
- Power: 4Kw (7.5hp)
- Voltage: 230v



For more information about Tenax USA products visit www.tenax4you.com
email: info@tenaxusa.com or call 1-800-341-0432

For more information about Weha USA products visit www.wehausa.com
email: info@wehausa.com or call 1-877-315-4761